



**Technical Specifications**

**General**

ID	: 5477
System Wattage	: 30W LED
Driver Integral	: Constant Current
Input Voltage	: 230-240Vac
Frequency	: 50-60Hz
Operating Voltage	: 100-277Vac
Operating Temperature	: -40°C~+50°C

**Light Source**

Light Source	: NICHIA
LED Lumens	: 4500 lm
CRI (Ra)	: >80
LED Colour Temperature	: 3000K / 4000K / 5700K

**Driver**

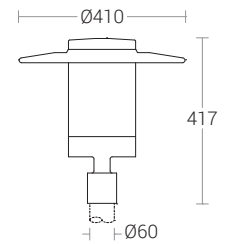
Power Supply	: Integral
Power Factor	: >0.95
THD	: <10%
Surge Protection	: 4KV
Efficiency	: >87%

**Physical**

Body	: Die Cast Aluminium flat top cover & Base
Reflector	: Spun Aluminium
Diffuser	: Translucent Polycarbonate
Mounting	: Suitable for Ø60mm OD Pipe
Finish	: Powder Coated Graphite Grey / Jet Black Anthracite Grey

**Optical Performance**

Colour Temperature	: 4000K
Luminous flux	: 1572 m
Light Distribution	: Symmetrical



**Photometric Data**

