

**Technical Specifications**

**General**

ID	: 4304
System Wattage	: 50W LED
Driver Integral	: Constant Current
Input Voltage	: 230-240Vac
Frequency	: 50-60 Hz
Operating Voltage	: 100-277Vac
Operating Temperature	: -15°C~+50°C

**Physical**

Body	: Die-cast aluminium
Diffuser	: Polycarbonate optical lens
Mounting	: Suitable for Mounting on 50mm OD pipe
Finish	: Powder coated Traffic Grey / Black.

**Light Source**

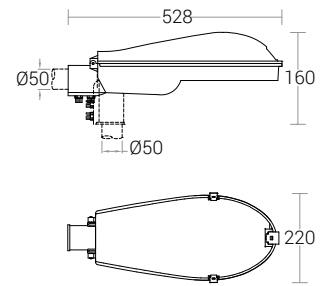
Light Source	: OSRAM / LUMILED
LED Lumens	: 7500 lm
CRI (Ra)	: >80
LED Colour Temperature	: 3000K / 4000K / 5700K

**Driver**

Power Supply	: Integral
Power Factor	: >0.95
THD	: <10%
Surge Protection	: 6KV
Efficiency	: >88%

**Optical Performance**

Colour Temperature	: 3000K / 4000K / 5700K
Luminaire Luminous flux	: 6128 / 5900 / 6224 lm
Light Distribution	: Type III



**Photometric Data**

