

"Navira Mini" pathway luminaire, is an innovative design options to provide visual integration with the environment. Aesthetically designed sturdy construction ensures a long life against all weather condition, maintaining initial performances through the lifetime of the installation. Product offered asymmetrical light distribution.

Product Description

- Luminaire made of die cast aluminium with non corrosive Stainless steel fasteners.
- Polycarbonate optical lens.
- Luminaire integrated with 30W LED.
- Suitable for mounting on 76mm / 88.9mm OD pipe, 72mm / 91mm square pipe.
- Extruded aluminium mounting pipe for easy installation onto the pole.
- Cable entries for through-wiring of mains supply cable.
- Integral constant current power supply
- CRI (Ra) : ≥ 70
- Prewired with LED driver and suitable for operating on 240V, 50Hz single phase ac supply.
- Ordering guide : KL-4438-CCT (Colour Temperature)
- Available CCT : 2700K, 4000K, 5700K



Product Benefits

- High luminous efficiency at reduced wattage.
- Elegance, Functionality.
- Environmental friendly, moisture proof, insect free.
- Low maintenance cost.
- Sustainable LED technology offers durability and optimal light output with low power consumption.

Area of Application

Illuminating parks, Gardens, Private driveways, Commercial complex, Pathways in Residential buildings & office complex.

Available Finish

Pure polyester powder coated

- Graphite grey
- Anthracite grey
- Jet black





Technical Specifications

General

ID	: 4438
System Wattage	: 30W LED
Driver Integral	: Constant Current
Input Voltage	: 230-240Vac
Frequency	: 50-60Hz
Operating Voltage	: 100-265Vac
Operating Temperature	: -15°C~+50°C

Physical

Body	: Die-Cast Aluminium
Diffuser	: Polycarbonate Optical Lens
Mounting	: Suitable for mounting on Ø76 / Ø88.9 / □72 / □91
Finish	: Powder Coated Graphite Grey / Jet Black Anthracite Grey

Light Source

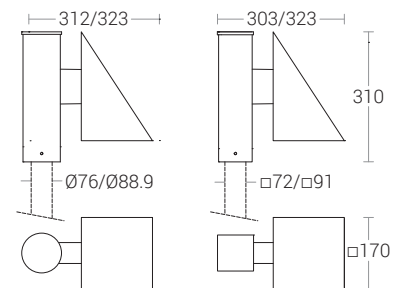
Light Source	: NICHIA
CRI (Ra)	: >70
LED Colour Temperature	: 2700K / 4000K / 5700K

Driver

Power Supply	: Integral
Power Factor	: >0.9
THD	: <10%
Surge Protection	: 4KV
Efficiency	: >85%

Optical Performance

Light Distribution	: Type II
--------------------	-----------



"Dual Navira Mini" pathway luminaire, is an innovative design options to provide visual integration with the environment. Aesthetically designed sturdy construction ensures a long life against all weather condition, maintaining initial performances through the lifetime of the installation. Product offered asymmetrical light distribution.

Product Description

- Luminaire made of die cast aluminium with non corrosive stainless steel fasteners.
- Polycarbonate optical lens.
- Luminaire integrated with 60W LED.
- Suitable for mounting on 76mm / 88.9mm OD pipe, 72mm / 91mm square pipe.
- Extruded aluminium mounting pipe for easy installation onto the pole.
- Cable entries for through-wiring of mains supply cable.
- Integral constant current power supply
- CRI (Ra) : ≥ 70
- Prewired with LED driver and suitable for operating on 240V, 50Hz single phase ac supply.
- Ordering guide : KL-4439-CCT (Colour Temperature)
- Available CCT : 2700K, 4000K, 5700K



Product Benefits

- High luminous efficiency at reduced wattage.
- Elegance, Functionality.
- Environmental friendly, moisture proof, insect free.
- Low maintenance cost.
- Sustainable LED technology offers durability and optimal light output with low power consumption.

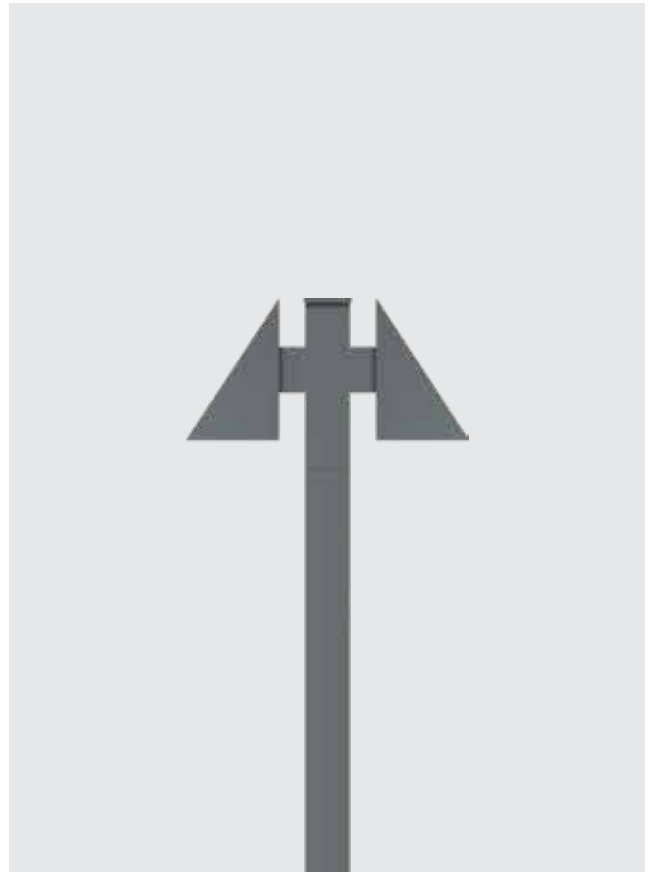
Area of Application

Illuminating parks, Gardens, Private driveways, Commercial complex, Pathways in Residential buildings & office complex.

Available Finish

Pure polyester powder coated

- Graphite grey
- Anthracite grey
- Jet black





Technical Specifications

General

ID	: 4439
System Wattage	: 60W LED
Driver Integral	: Constant Current
Input Voltage	: 230-240Vac
Frequency	: 50-60Hz
Operating Voltage	: 100-265Vac
Operating Temperature	: -15°C~+50°C

Physical

Body	: Die-Cast Aluminium
Diffuser	: Polycarbonate Optical Lens
Mounting	: Suitable for mounting on Ø76 / Ø88.9 / □72 / □91
Finish	: Powder Coated Graphite Grey / Jet Black Anthracite Grey

Light Source

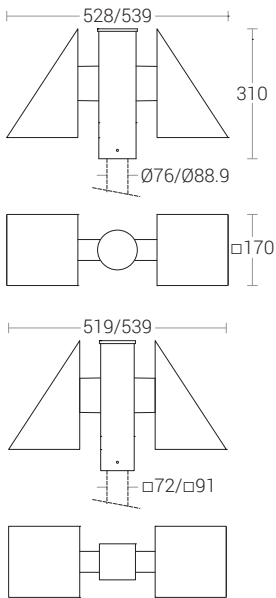
Light Source	: NICHIA
CRI (Ra)	: >70
LED Colour Temperature	: 2700K / 4000K / 5700K

Driver

Power Supply	: Integral
Power Factor	: >0.9
THD	: <10%
Surge Protection	: 4KV
Efficiency	: >85%

Optical Performance

Light Distribution	: Type II
--------------------	-----------



Note : It is our constant endeavor to upgrade the performance of our products. For the latest technical information, IES files and product updates please refer to the website at www.klite.in

"Navira Mini" pathway luminaire, is an innovative design options to provide visual integration with the environment. Aesthetically designed sturdy construction ensures a long life against all weather condition, maintaining initial performances through the lifetime of the installation. Product offered asymmetrical light distribution.

Product Description

- Luminaire made of die cast aluminium with non corrosive Stainless steel fasteners.
- Polycarbonate optical lens.
- Luminaire integrated with 50W LED.
- Suitable for mounting on 76mm / 88.9mm OD pipe, 72mm / 91mm square pipe.
- Extruded aluminium mounting pipe for easy installation onto the pole.
- Cable entries for through-wiring of mains supply cable.
- Integral constant current power supply
- CRI (Ra) : ≥ 70
- Prewired with LED driver and suitable for operating on 240V, 50Hz single phase ac supply.
- Ordering guide : KL-4445-CCT (Colour Temperature)
- Available CCT : 2700K, 4000K, 5700K



Product Benefits

- High luminous efficiency at reduced wattage.
- Elegance, Functionality.
- Environmental friendly, moisture proof, insect free.
- Low maintenance cost.
- Sustainable LED technology offers durability and optimal light output with low power consumption.

Area of Application

Illuminating parks, Gardens, Private driveways, Commercial complex, Pathways in Residential buildings & office complex.

Available Finish

Pure polyester powder coated

- Graphite grey
- Anthracite grey
- Jet black





Technical Specifications

General

ID	: 4445
System Wattage	: 50W LED
Driver Integral	: Constant Current
Input Voltage	: 230-240Vac
Frequency	: 50-60Hz
Operating Voltage	: 100-277Vac
Operating Temperature	: -15°C~+50°C

Physical

Body	: Die-Cast Aluminium
Diffuser	: Polycarbonate Optical Lens
Mounting	: Suitable for mounting on Ø76 / Ø88.9 / □72 / □91
Finish	: Powder Coated Graphite Grey / Jet Black Anthracite Grey

Light Source

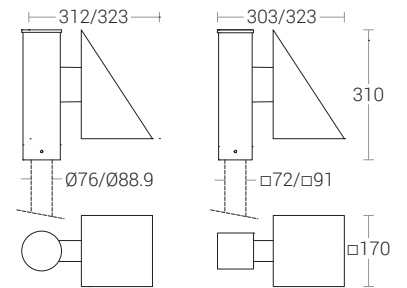
Light Source	: NICHIA
CRI (Ra)	: >70
LED Colour Temperature	: 2700K / 4000K / 5700K

Driver

Power Supply	: Integral
Power Factor	: >0.95
THD	: <10%
Surge Protection	: 6KV
Efficiency	: >85%

Optical Performance

Light Distribution	: Type II
--------------------	-----------



"Dual Navira Mini" pathway luminaire, is an innovative design options to provide visual integration with the environment. Aesthetically designed sturdy construction ensures a long life against all weather condition, maintaining initial performances through the lifetime of the installation. Product offered asymmetrical light distribution.

Product Description

- Luminaire made of die cast aluminium with non corrosive SS fasteners.
- Polycarbonate optical lens.
- Luminaire integrated with 100W LED.
- Suitable for mounting on 76mm / 88.9mm OD pipe, 72mm / 91mm square pipe.
- Extruded aluminium mounting pipe for easy installation onto the pole.
- Surface mounting on wall using hardware after connecting to the power supply.
- Cable entries for through-wiring of mains supply cable.
- Integral constant current power supply
- CRI (Ra) : ≥ 70
- Prewired with LED driver and suitable for operating on 240V, 50Hz single phase ac supply.
- Ordering guide : KL-4446-CCT (Colour Temperature)
- Available CCT : 2700K, 4000K, 5700K



Product Benefits

- High luminous efficiency at reduced wattage.
- Elegance, Functionality.
- Environmental friendly, moisture proof, insect free.
- Low maintenance cost.
- Sustainable LED technology offers durability and optimal light output with low power consumption.

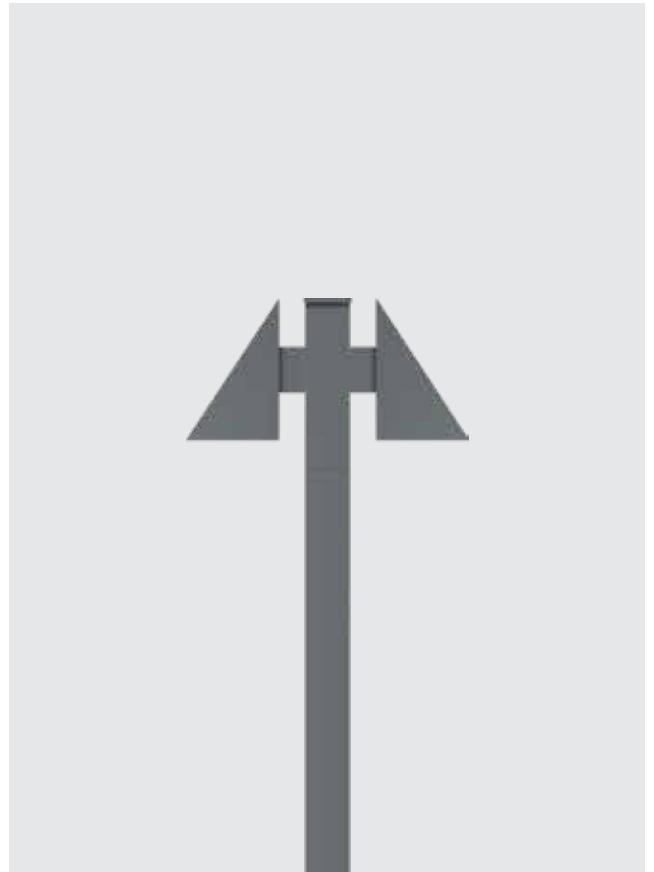
Area of Application

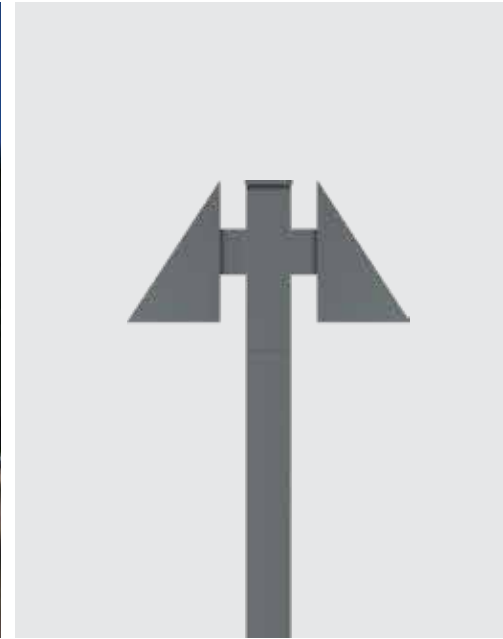
Illuminating parks, Gardens, Private driveways, Commercial complex, Pathways in Residential buildings & office complex, Internal passages.

Available Finish

Pure polyester powder coated

- Graphite grey
- Anthracite grey
- Jet black





Technical Specifications

General

ID	: 4446
System Wattage	: 100W LED
Driver Integral	: Constant Current
Input Voltage	: 230-240Vac
Frequency	: 50-60Hz
Operating Voltage	: 100-277Vac
Operating Temperature	: -15°C~+50°C

Physical

Body	: Die-Cast Aluminium
Diffuser	: Polycarbonate Optical Lens
Mounting	: Suitable for mounting on Ø76 / Ø88.9 / □72 / □91
Finish	: Powder Coated Graphite Grey / Jet Black Anthracite Grey

Light Source

Light Source	: NICHIA
CRI (Ra)	: >70
LED Colour Temperature	: 3000K / 4000K / 5700K

Driver

Power Supply	: Integral
Power Factor	: >0.95
THD	: <10%
Surge Protection	: 6KV
Efficiency	: >85%

Optical Performance

Light Distribution	: Type II
--------------------	-----------

