

# K-LITE

## POWER WASH

Power : 40W      80W  
Length : 1214 mm      2400 mm

Upto  
100  
lm/w

### Features

- NICHIA LED's
- 3000K / 4000K / 5700K
- Ra>80 (>90 On Request)
- SDCM ≤ 3
- L70 / B10 @ 60,000 Hrs

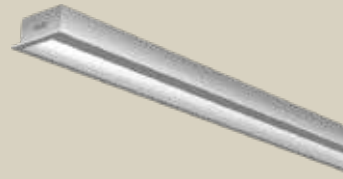


### Options

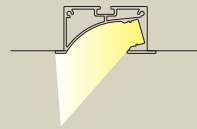
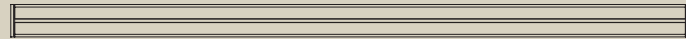
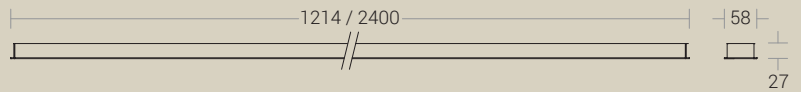
- Through wiring
- Dimmable options



RECESSED



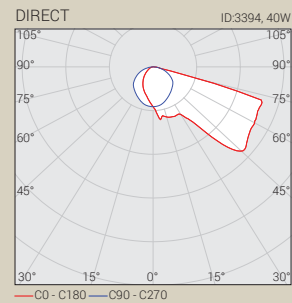
### Dimension in mm

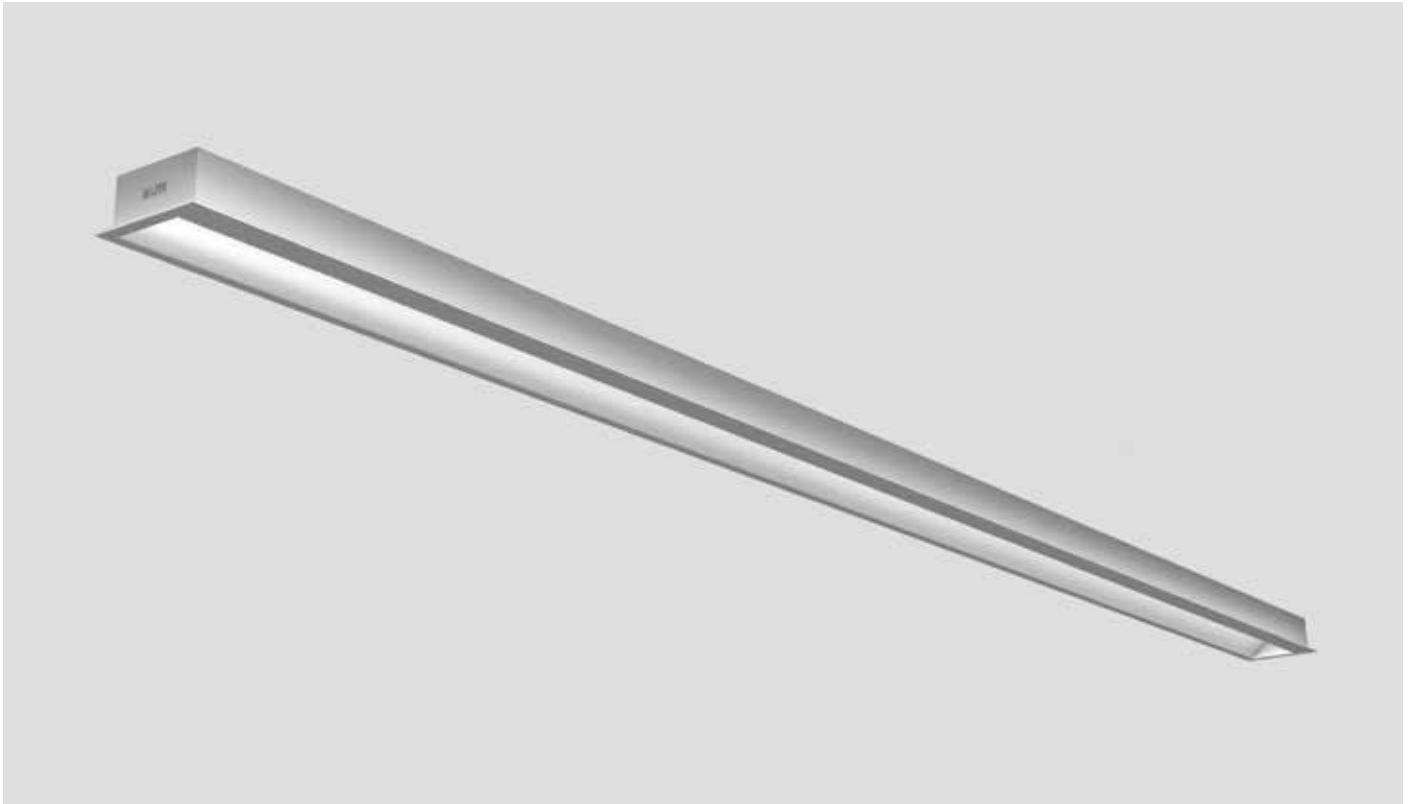


### Housing Colour

- High-quality aluminium with powder coated finish in RAL9005 Black fine texture | RAL9016 White fine texture | RAL9006 Grey fine texture

### Light Distribution





Technical Specifications

General

Driver : Constant Current  
 Input Voltage : 220-240Vac  
 Operating Temperature : +25°C~+55°C

Physical

Body : High-Grade Aluminium with Endcaps  
 Mounting : Recessed  
 Finish : White(RAL9016)  
 Black(RAL9005)  
 Grey (RAL 9006)

Light Source

Light Source : NICHIA  
 CRI (Ra) : >80 (>90 On Request)  
 LED Colour Temperature : 3000K / 4000K / 5700K

Driver

Power Supply : Integrated  
 Power Factor : >0.95  
 THD : <10%  
 Surge Protection : 3KV  
 Efficiency : >85%

Optical

Tilt : Fixed  
 Diffuser/Lens Material : PC Opal diffuser  
 UGR : <19

Ordering Guide

Recess - Direct

ID	Wattage	Dimension (mm)	C.O.D
3394	40W	1214 x 58 x 27	1203 x 48
3395	80W	2400 x 58 x 27	2389 x 48