

"Navya" pathway luminaire, is an innovative design options to provide visual integration with the environment. Aesthetically designed sturdy construction ensures a long life against all weather condition, maintaining initial performances through the lifetime of the installation. Product offered asymmetrical light distribution.

Product Description

- Luminaire body made of extruded aluminium alloy (grade 6063) with die cast aluminium components and non corrosive SS fasteners.
- Polycarbonate optical lens.
- Luminaire integrated with 48W LED.
- Suitable for mounting on 76mm / 88.9mm OD pipe, 72mm / 91mm square pipe.
- Extruded aluminium mounting pipe for easy installation onto the pole.
- Cable entries for through-wiring of mains supply cable.
- Integral constant current power supply
- CRI (Ra) : ≥ 70
- Prewired with LED driver and suitable for operating on 240V, 50Hz single phase ac supply.
- Ordering guide : KL-4442-CCT (Colour Temperature)
- Available CCT : 2700K, 4000K, 5700K



Product Benefits

- High luminous efficiency at reduced wattage.
- Elegance, Functionality.
- Environmental friendly, moisture proof, insect free.
- Low maintenance cost.
- Sustainable LED technology offers durability and optimal light output with low power consumption.

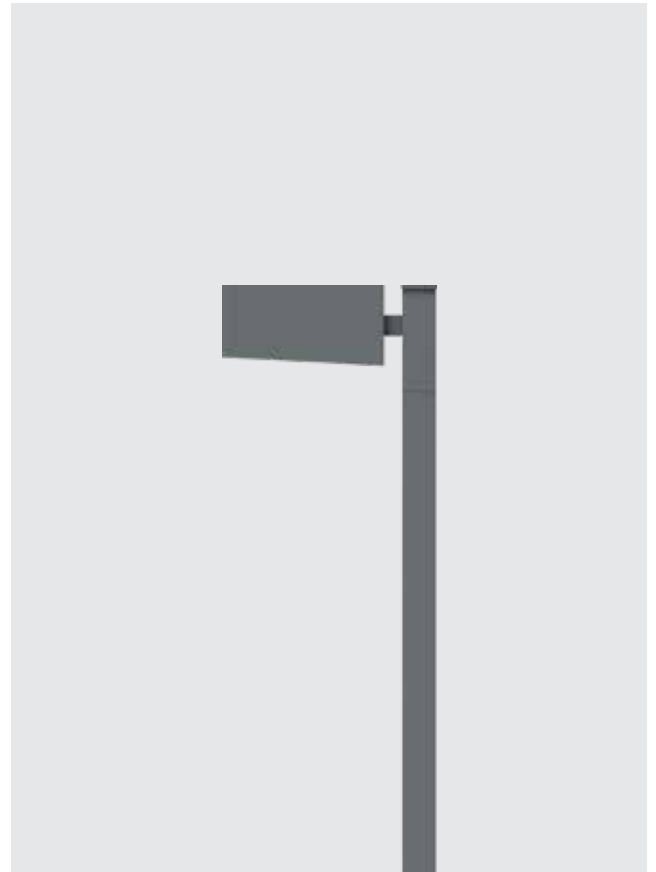
Area of Application

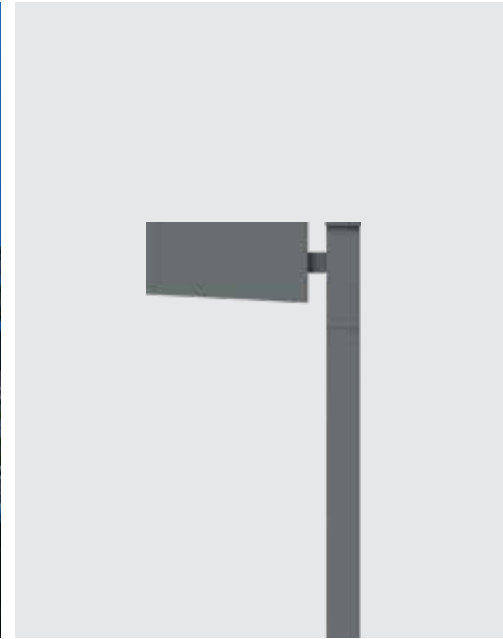
Illuminating parks, Gardens, Private driveways, Commercial complex, Pathways in Residential buildings & office complex.

Available Finish

Pure polyester powder coated

- Graphite grey
- Anthracite grey
- Jet black





Technical Specifications

General

ID	: 4442
System Wattage	: 48W
Driver Integral	: Constant Current
Input Voltage	: 230-240Vac
Frequency	: 50-60 Hz
Operating Voltage	: 100-300Vac
Operating Temperature	: -15°C~+50°C

Physical

Body	: Extruded Aluminum
Diffuser	: Polycarbonate Optical Lens
Mounting	: Suitable for mounting on Ø76 / Ø88.9 / □72 / □91
Finish	: Powder Coated Graphite Grey / Jet Black Anthracite Grey

Light Source

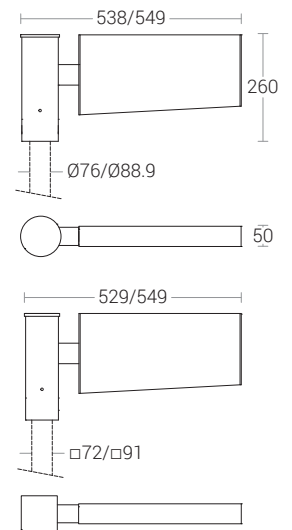
Light Source	: NICHIA
CRI (Ra)	: >70
LED Colour Temperature	: 2700K / 4000K / 5700K

Driver

Power Supply	: Integral
Power Factor	: >0.95
THD	: <10%
Surge Protection	: 6KV
Efficiency	: >88%

Optical Performance

Light Distribution	: Type II Medium
--------------------	------------------



"Dual Navya" pathway luminaire, is an innovative design options to provide visual integration with the environment. Aesthetically designed sturdy construction ensures a long life against all weather condition, maintaining initial performances through the lifetime of the installation. Product offered asymmetrical light distribution.

Product Description

- Luminaire body made of extruded aluminium alloy (grade 6063) with die cast aluminium components and non corrosive SS fasteners.
- Polycarbonate optical lens.
- Luminaire integrated with 96W LED.
- Suitable for mounting on 76mm / 88.9mm OD pipe, 72mm / 91mm square pipe.
- Extruded aluminium mounting pipe for easy installation onto the pole.
- Cable entries for through-wiring of mains supply cable.
- Integral constant current power supply
- CRI (Ra) : ≥ 70
- Prewired with LED driver and suitable for operating on 240V, 50Hz single phase ac supply.
- Ordering guide : KL-4443-CCT (Colour Temperature)
- Available CCT : 2700K, 4000K, 5700K



Product Benefits

- High luminous efficiency at reduced wattage.
- Elegance, Functionality.
- Environmental friendly, moisture proof, insect free.
- Low maintenance cost.
- Sustainable LED technology offers durability and optimal light output with low power consumption.

Area of Application

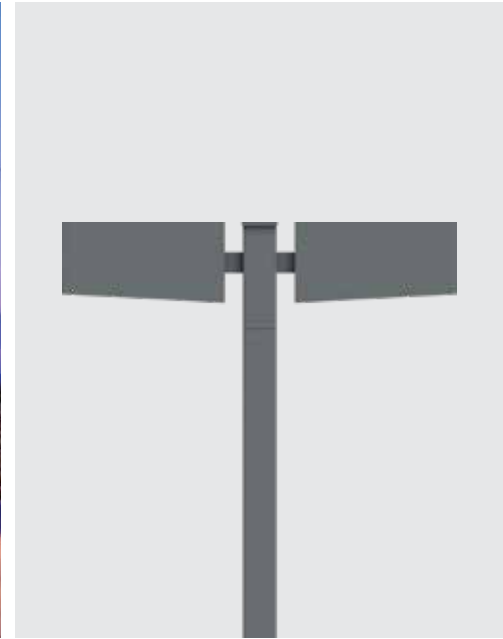
Illuminating parks, Gardens, Private driveways, Commercial complex, Pathways in Residential buildings & office complex.

Available Finish

Pure polyester powder coated

- Graphite grey
- Anthracite grey
- Jet black





Technical Specifications

General

ID	: 4443
System Wattage	: 96W
Driver Integral	: Constant Current
Input Voltage	: 230-240Vac
Frequency	: 50-60 Hz
Operating Voltage	: 100-300Vac
Operating Temperature	: -15°C~+50°C

Physical

Body	: Extruded Aluminum
Diffuser	: Polycarbonate Optical Lens
Mounting	: Suitable for mounting on Ø76 / Ø88.9 / □72 / □91
Finish	: Powder Coated Graphite Grey / Jet Black Anthracite Grey

Light Source

Light Source	: NICHIA
CRI (Ra)	: >70
LED Colour Temperature	: 2700K / 4000K / 5700K

Driver

Power Supply	: Integral
Power Factor	: >0.95
THD	: <10%
Surge Protection	: 6KV
Efficiency	: >88%

Optical Performance

Light Distribution	: Type II Medium
--------------------	------------------

