

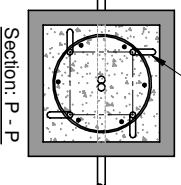
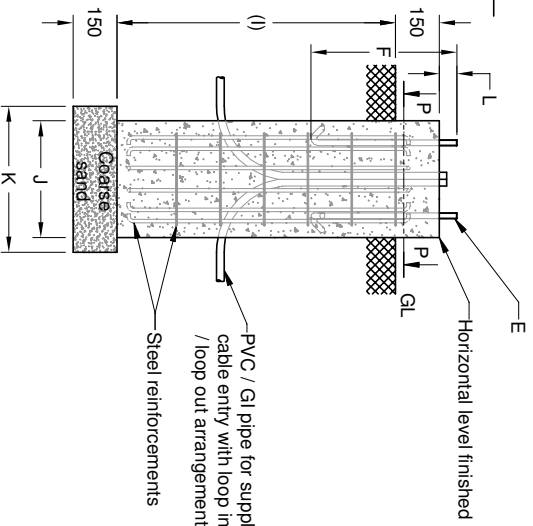
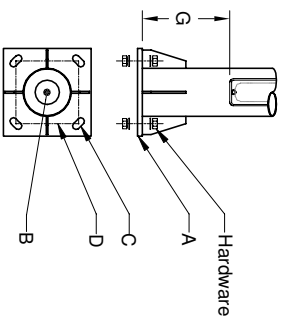
ALL DIMENSIONS ARE IN MM

K - LITE STANDARD (S1) POLE FOUNDATION DETAILS

| Figure  | Pole height | Base plate (A) | Cable entry Hole(B) | No. of holes/ bolts (C) | CC (D) | Foundation bolt projection height (L) | Bolt (E) | Length (F) | Junction box from base plate (G) | RCC Height below GL / Digging depth (I) | Length of RCC layer (J) | Length of coarse sand layer (K) |
|---------|-------------|----------------|---------------------|-------------------------|--------|---------------------------------------|----------|------------|----------------------------------|---|-------------------------|---------------------------------|
| KP-51.1 | 5000        | □250 x 12thk   | Ø70                 | 4                       | 180    | 60                                    | M16      | 500        | 300                              | 800                                     | □400                    | □500                            |
| KP-51.2 | 6000        | □250 x 12thk   | Ø70                 | 4                       | 180    | 60                                    | M16      | 500        | 300                              | 1000                                    | □400                    | □500                            |
| KP-51.3 | 7000        | □300 x 16thk   | Ø70                 | 4                       | 215    | 75                                    | M20      | 500        | 300                              | 1000                                    | □400                    | □500                            |
| KP-51.4 | 8000        | □300 x 16thk   | Ø70                 | 4                       | 215    | 75                                    | M20      | 500        | 300                              | 1200                                    | □400                    | □500                            |
| KP-51.5 | 9000        | □300 x 16thk   | Ø70                 | 4                       | 215    | 75                                    | M20      | 500        | 300                              | 1200                                    | □400                    | □500                            |
| KP-51.6 | 10000       | □400 x 16thk   | Ø125                | 4                       | 300    | 75                                    | M20      | 700        | 300                              | 1500                                    | □500                    | □600                            |
| KP-51.7 | 11000       | □400 x 16thk   | Ø125                | 4                       | 300    | 75                                    | M20      | 700        | 300                              | 1800                                    | □500                    | □600                            |
| KP-51.8 | 12000       | □400 x 16thk   | Ø125                | 4                       | 300    | 100                                   | M24      | 1000       | 300                              | 1800                                    | □500                    | □600                            |

Note :

1. Typical foundation drawing for standard soil condition.
2. Parameters considered in RCC foundation design :  
Load bearing capacity of soil (LBC) : 10 Mtr/m<sup>2</sup> (Minimum)  
Basic wind speed : 50 m/s  
Grade of steel reinforcement : Fe 415  
Grade of foundation bolt : 4.6
3. Height of foundation above ground level (150mm) may be revised to suit the site conditions especially considering the expected water level stagnation.
4. Template supplied is suggested to be used for locating the CC of foundation bolts.
5. 4 Nos. of foundation bolt have to be oriented (located), while casting the foundation such that the door of the electrical junction box face the required direction.
6. PVC / GI pipe for entry of supply cable and the materials required for foundation are not scope of our supply.



| REV. No. | REVISION DETAILS | DATE | REVISED | CHD | APPD |
|----------|------------------|------|---------|-----|------|
| 1        |                  |      |         |     |      |

Z:\KP\005.FOUNDATION DETAIL SKP - DFD - 111 (KP-51)\REV 00.dwg

DETAILED FOUNDATION DRAWING FOR KP - 51  
SURFACE MOUNTED SWAGED POLE

|                      |         |          |   |                  |          |
|----------------------|---------|----------|---|------------------|----------|
| DRAWN<br>THIRUPPATHI | CHECKED | APPROVED | DATE<br>21-02-2022                          | SCALE<br>1 : .45 | MATERIAL |
| <b>K-LITE</b>        |         |          | <b>K-LITE INDUSTRIES</b><br>CHENNAI-600 058 |                  |          |

|                        |           |                 |
|------------------------|-----------|-----------------|
| DRG. NO.<br>KP-DFD-111 | REV<br>00 | SHEET<br>1 of 1 |
|------------------------|-----------|-----------------|

THIS DWG SUPERSEDED FROM KP-DFD-51 REV00

A

B

C

D

A

B

C

D

1

2

3

4

5

6