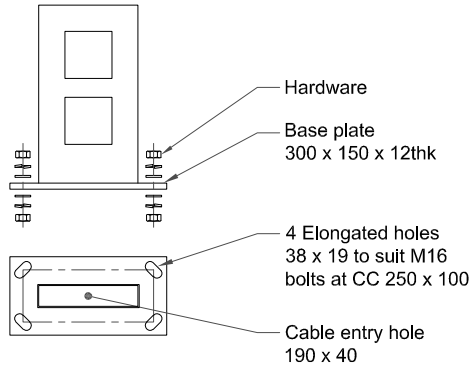


DWG. No. : KL-DFD-088
SHEET No. : 1 of 1

ALL DIMENSIONS ARE IN mm

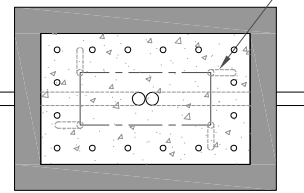
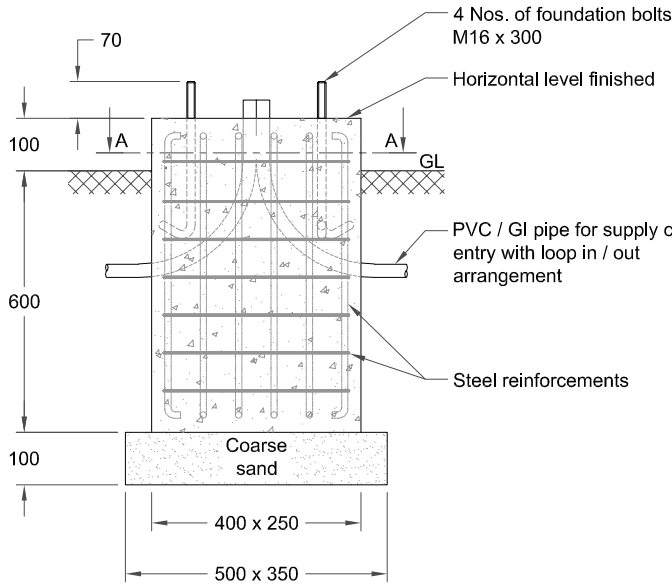
F

F



E

E



Section: A - A

D

D

Note :

- Typical foundation drawing suitable for standard soil condition.
- Parameters considered in RCC foundation design :
 - Load bearing capacity of soil (LBC) : 10 Mt/m² (Minimum)
 - Basic wind speed : 50 m/s
 - Grade of steel reinforcement : Fe 415
 - Grade of foundation bolt : 4.6
- Height of foundation above ground level (100mm) may be revised to suit the site conditions especially considering the expected water level stagnation.
- Template supplied is suggested to be used for locating the CC of foundation bolts.
- 4 Nos. of foundation bolt have to be oriented (located), while casting the foundation such that the door of the electrical junction box faces the required direction.
- PVC / GI pipe for entry of supply cable and the materials required for foundation are not scope of our supply.

C

C

B

B

02	FOUNDATION BOLT CHANGED	09-07-22	THIRUPPATHI		
01	BASE PALTE INSERT PIPE LENGTH REVISED	08-09-20	ABISHEK		
REV. No.	REVISION DETAILS	DATE	REVISED	CHD	APPD

DRAWN R.SATHISH	CHECKED	APPROVED	DATE 15-02-19	SCALE 1:15	MATERIAL -
--------------------	---------	----------	------------------	---------------	---------------

Z:\K - LITE\006.FOUNDATION DETAILS\KL - DFD - 088 (M35)\KL-DFD-088 REV 02.dwg

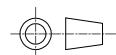
A

A

K-LITE

K-LITE INDUSTRIES
CHENNAI-600 058

DETAILED FOUNDATION DRAWING FOR M35
300 x 150 x 12 (FOUNDATION BOLT M16 x 300)



DRG. NO.

KL-DFD-088

REV
02

SHEET
1 of 1